

LG ACCESSIBLE LIVING SOLUTIONS INC.



**1.800.930.0904**

With LG Accessible Living Solutions, you get more than compliance — you get quality, innovation, and peace of mind.

## **PARTNER WITH US**

When you choose LG Accessible Living Solutions, you're choosing more than ADA compliance — you're choosing superior design, durability, and long-term peace of mind. Let's make accessibility a standard of excellence in every project.



**Email:**

[info@lgshowers.com](mailto:info@lgshowers.com)



**Phone:**

**1.800.930.0904**



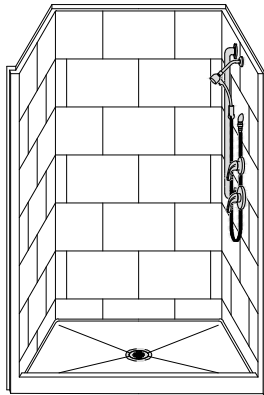
**For More Information:**

[www.lgshowers.com](http://www.lgshowers.com)

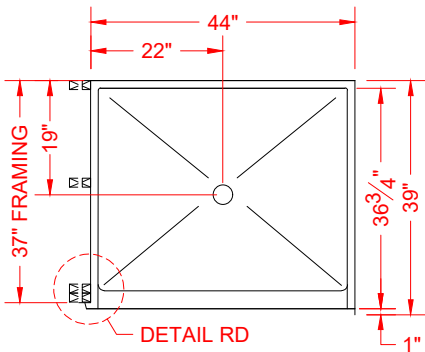
MODEL: LB3S4638CP\*L/R

\*ALL ACCESSORIES OPTIONAL

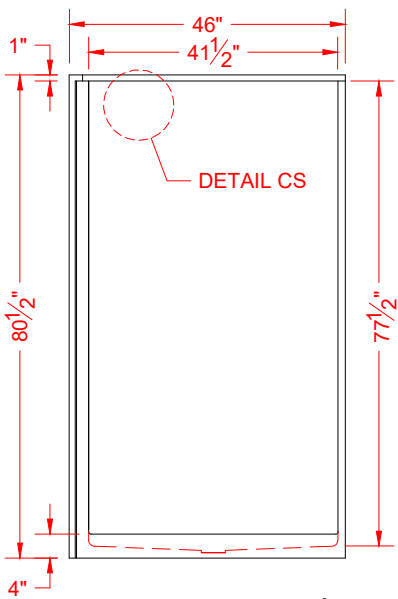
INDEPENDENT  
LIVING



PERSPECTIVE VIEW - N.T.S.  
MODEL SHOWN HERE AS:  
RIGHT PLUMBING  
LEFT REVEAL



TOP VIEW - SCALE  $\frac{3}{8}$ " = 1'-0"



FRONT ELEVATION - SCALE:  $\frac{3}{8}$ " = 1'-0"



Features:

- Molded, one-piece gelcoat/fiberglass shower module
- "Subway" 12" x 18" wall finish, white (standard)
- Integral full wood backing for strength and unlimited accessory placement

\* - SEE BACK FOR DETAIL SECTIONS

PRODUCT SPECIFICATIONS:

- Single-piece shower module shall be constructed of gelcoat/fiberglass with full integral plywood backing
- Rough-In: Stud opening 1/8" +1/4" Nominal Dimensions.
- Door opening 41-1/2" x 75-1/2"
- C.S.I. FORMAT SPECIFICATION TEXT AVAILABLE

PRODUCT INFORMATION:

- Accessories: Factory installed, unless prone to damage during installation/shipping. Polished chrome/satin stainless standard, others available.
- Colors: White as standard, others to match any major fixture manufacturer.

OPTIONAL ACCESSORIES:

INSTALLED AT FACTORY:

- Seat, folding
- Grab bar
- Soap dish
- Mixing valve, pressure-balancing, lever handle, pre-plumbed tree to supply elbow
- Curtain rod brackets

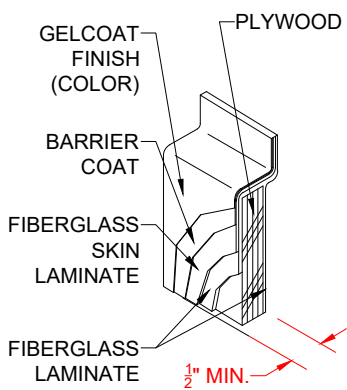
INSTALLED BY OTHERS:

- Curtain and rod
- Flange-Window trim kits
- No-caulk brass drain

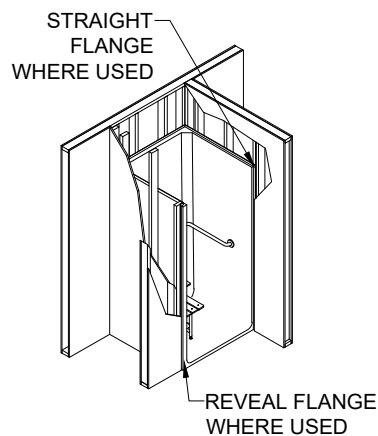
CODES:

- Designed and manufactured in compliance with the following standards and codes:
- ANSI Z124.2 Standards for Plastic Showers
  - IPC International Plumbing Code
  - UPC Uniform Plumbing Code

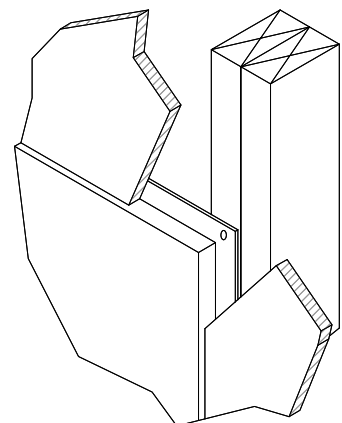
NOTICE OF LIMITATION:



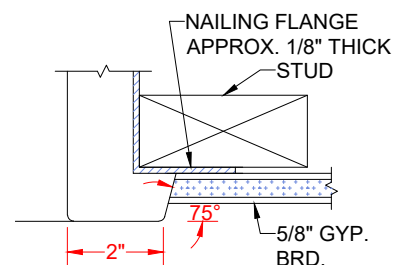
**DETAIL CS - SCALE: N.T.S.**  
**CROSS SECTION DETAIL**



**DETAIL FD - SCALE: N.T.S.**  
**FRAMING DETAIL**



**DETAIL DD - SCALE: N.T.S.**  
**DRYWALL DETAIL**



**ISOMETRIC**  
**DETAIL RD - SCALE: 3" = 1'-0"**  
**REVEAL DETAIL**